

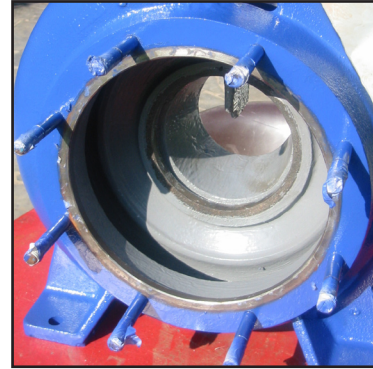
## Classic Pump Refurbishment with Belzona



*Rebuilding profiles underway*



*Another view of profiles*



*Completed application*

### STATISTICS

#### CUSTOMER

Copper manufacturer,  
Belgium

#### APPLICATION DATE

November 2005

#### SUBSTRATE

Steel

#### PRODUCTS

Belzona® 1321  
Belzona® 1111

#### APPLICATION SITUATION

Pump housing.

#### PROBLEM

Erosion/corrosion from constant water flow within the pump caused erosion in critical parts of the housing.

#### APPLICATION METHOD

The application was carried out in accordance with Belzona Know-How System Leaflet CEP-2 & -5.

#### BELZONA FACTS

Belzona was chosen because the customer had had numerous good experiences with Belzona on previous applications in pumps.